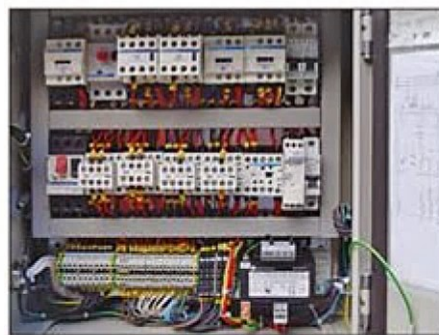


MT SERIES



LIFTING CAPACITY kg	REEVING 2/1 – 4/2						
	TYPE	DIN 15020 FEM 9.511	LIFTING HEIGHT, m		LIFTING SPEED, m/min		
			2/1	4/2	V1	V2	V3
400	MT201	3m	6;10;14;21;28;37;42	-	8; 2/8	12; 2/12	16; 2.5/16
500	MT202	2m	6;10;14;21;28;37;42	-	8; 2/8	12; 2/12	16; 2.5/16
800	MT304	3m	6;10;13;20;27;38;42	6.5;11;15.5	8; 2/8	12; 2/12	16; 2.5/16
1 000	MT305	2m	6;10;13;20;27;38;42	6.5;11;15.5	8; 2/8	12; 2/12	16; 2.5/16
1 600	MT408	3m	5.5;9;12;20;26;34;39; 47;52;60	6;9;13	8; 2/8	12; 2/12	16; 2.5/16
2 000	MT410	2m	5.5;9;12;20;26;34;39; 47;52;60	6;9;13	8; 2/8	12; 2/12	16; 2.5/16
2 500	MT512	3m	5.5;9;12;18;25;32;38 43;49	5;8.5;12	8; 2/8	12; 2/12	16; 2.5/16
3 200	MT516	2m	5.5;9;12;18;25;32;38 43;49	5;8.5;12	8; 2/8	12; 2/12	16; 2.5/16
4 000	MT620	3m	4.5;8;11;17;23;30;35; 40;46;54;60	3.6;8.5;11; 16;18.5;22	8; 2/8	12; 2/12	16; 2.5/16
5 000	MT625	2m	4.5;8;11;17;23;30;35; 40;46;54;60	3.6;8.5;11; 16;18.5;22	8; 2/8	12; 2/12	16; 2.5/16
	MT725	4m	9;14.5;20;27;34;40.5; 46;54;60	6.5;10;13.5;17; 19.5; 23.5;26.5	8; 2/8	12; 2/12	16; 2.5/16
		3m	8;12;17;23;29;35;40; 47;52	6.5;10;13.5;17; 19.5; 23.5;26.5	8; 2/8	12; 2/12	16; 2.5/16
6 300	MT732	3m	8;12;17;23;29;35;40; 47;52	6.5;10;13.5;17; 19.5; 23.5;26.5	8; 2/8	12; 2/12	16; 2.5/16
8 000	MT I 740	3m	8;12;17;23;29;35;40; 47;52	6.5;10;13.5;17; 19.5; 23.5;26.5	8; 2/8	12; 2/12	-
8 000	MT740	2m	8;12;17;23;29;35;40; 47;52	6.5;10;13.5;17; 19.5; 23.5;26.5	8; 2/8	12; 2/12	16; 2.5/16
10 000	MT II 750	3m	8;12;17;23;29;35;40; 47;52	4.5;7.5;10.5 15.5;19.5; 22	6; 1.5/6	9; 1.5/9	-
	MT I 750	2m	8;12;17;23;29;35;40; 47;52	6.5;10;13.5;17; 19.5; 23.5;26.5	8; 2/8	12; 2/12	-
12 500	MT II 763	2m	8;12;17;23;29;35;40; 47;52	4.5;7.5;10.5 15.5;19.5; 22	6; 1.5/6	9; 1.5/9	-
16 000	MT780	1Am	8;12;17;23;29;35;40; 47;52	4.5;7.5;10.5 15.5;19.5; 22	4; 1/4	6; 1/6	-



CATALOGUE WIRE ROPE HOISTS

ELECTRIC MOTOR PARAMETERS



PARAMETERS OF THE LIFTING ELECTRIC MOTORS WITH A BUILT-IN BRAKE (400 V, 50 HZ)

Dimensions	Lifting capacity, kg	Group by FEM 9.511	Single-speed lift						Double-speed lift					
			V1		V2		V3		V1		V2		V3	
			P _H , kW	I _H , A	P _H , kW	I _H , A	P _H , kW	I _H , A	P _H , kW	I _H , A	P _H , kW	I _H , A	P _H , kW	I _H , A
MT202	500	2m	0.75	3.3	1.1	3.6	4.5	12.0	0.16/0.75	3.0/3.4	0.16/1.1	3.0/3.5	0.7/4.5	6.0/9.5
MT305	1000		1.5	5.8	2.3	6.0	4.5	12.0	0.33/1.5	3.7/5.0	0.33/2.2	3.7/6.2	0.7/4.5	6.0/9.5
MT410	2000		3.0	11.0	4.5	12.0	12.0	28.0	0.7/3.0	6.0/7.5	0.7/4.5	6.0/9.5	1.7/12.5	15.0/23.0
MT516	3200		4.5	12.3	7.5	17.0	12.0	28.0	1.0/4.8	11.0/12.0	1.0/7.5	11.0/15.0	1.7/12.5	15.0/23.0
MT625	5000		8.0	24.5	12.0	28.0	15.5	29.5	1.7/8.0	15.0/18.0	1.7/12.5	15.0/23.0	4.0/24.0	70.0/48.0
MT740	8000		12.5	36.0	22	49	22	49	3.0/13.0	40.0/30.0	4.0/24.0	70.0/48.0	4.0/24.0	70.0/48.0
MT750	10000		16	36	22	49	-	-	4.0/16	70/36	4.0/24.0	70.0/48.0	-	-
MT763	12500	16	36	22	49	-	-	4.0/16	70/36	4.0/24.0	70.0/48.0	-	-	
MT780	16000	1Am	12.5	36	22	49	-	-	3.0/13.0	40.0/30.0	4.0/24.0	70.0/48.0	-	-

PARAMETERS OF THE ELECTRIC MOTORS WITH A BUILT-IN BRAKE FOR MONORAIL HOIST RUNNING GEARS (400 V, 50 HZ)

Dimensions	Lifting capacity, kg		Group by FEM 9.511	Lifting height, m		Conveying speed, m/min					
						8,10,12, 20		15, 32		4/12, 5/15, 6.5/20, 10/32*	
	2/1	4/1		2/1	4/1	P _H , kW	I _H , A	P _H , kW	I _H , A	P _H , kW	I _H , A
MT202	500	-	2m	6,10,14	-	0.12	0.82	0.18	0.75	0.06/0.18	1.4/1.2
MT305	1000	-		6,10,13	-						
	-	2000		-	6.5						
MT410	2000	4000		5.5,9,12	6	0.25	1.2	0.37	1.5	0.11/0.37	1.7/1.4
MT516	3200	-		5.5,9,12	-						
	-	6300		-	6	0.37	1.8	0.55	2.1	0.11/0.37	1.7/1.4
MT625	5000	-	4.5,8,11	-							

* exceptional for MT 516 (4x1) and MT625

Dimensions	Lifting capacity, kg		Group by FEM 9.511	Lifting height, m		Conveying speed, m/min					
						8,10,12, 20		15, 32		4/12, 5/15, 6.5/20, 10/32*	
	2/1	4/1		2/1	4/1	P _H , kW	I _H , A	P _H , kW	I _H , A	P _H , kW	I _H , A
MT202	500	-	2m	21,28,37,42	-	2x0.12	0.82	2x0.18	0.75	2x0.06/0.18	1.4/1.2
MT305	1000	-		20,27,38,42	-						
	-	2000		-	10,13.5						
MT410	2000	4000		20,26,34,39 47,52,60	10,13	2x0.25	1.2	2x0.37	1.5	2x0.11/0.37	1.7/1.4
MT516	3200	6300		18,25,32 38,43,49	9,12.5						
MT625	5000	-		17,23,30,35 40,46,54,60	-	2x0.37	1.8	2x0.55	2.1	2x0.11/0.37	1.7/1.4
		-		10000	-						
MT740	8000	-		8,12,17,23,29 35,40,47,52	-						
MT750	10000	-									
MT763	12500	-									

* exceptional for MT625 (4/1) and MT740, MT750 and MT763